



CB BASIC

User Manual



Coldbuster Floor Heating

Unit 10, 14 Rodborough Rd
Frenchs Forest NSW 2086

Phone: +61 2 9982 5374 / Toll Free: 1800 85 75 65

Email: sales@coldbuster.com.au

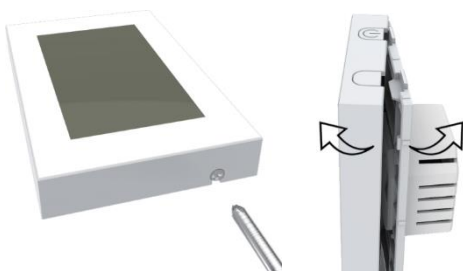
Website: www.coldbuster.com.au

Instruction

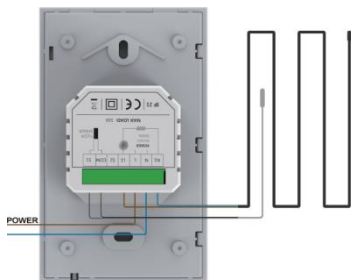
The CB Basic thermostat controls a floor heating system based on a built-in weekly program. You can set individual temperatures for 4 events or 2 events on different days of the week. The default weekly program parameters can satisfy most installations. If your living habits are different, you can update the weekly program parameters in the thermostat or APP. Lowering the temperature when the home is unoccupied will reduce your energy costs without reducing comfort. Furthermore, the thermostat features an adaptive function that automatically changes heating period start times to ensure that the required temperature is reached at the required time. After some days the adaptive function has learned when the heating must be switched on.

Technical Specification

Supply voltage:	85-265 VAC 50/60 Hz	Standby Power Loss:	<1W
Load:	Max.16 A (resistive load)	Cable Diameter:	≤2.5mm ²

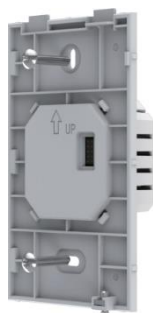


1. Loosen the bottom screw with a Phillips screwdriver. Then open the thermostat from the right corner as shown.
Note: Screw the nut out of the groove. No need to unscrew it.

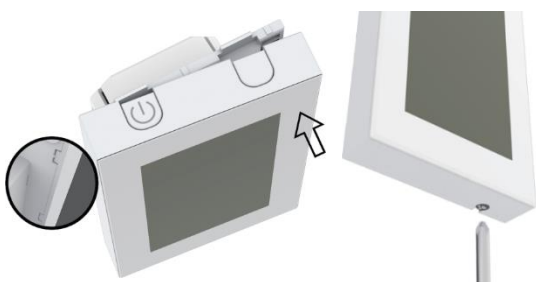


2. Wire as shown:
L/N lead: Connect the power cord using the terminal block.
Use a terminal block to connect the load line.
L1/N1 lead: Use a terminal block to connect the load line.
COM/S1 terminal: Connect the floor sensor.

Note: Disconnect the main power supply before wiring.



3. Install the back cover into the terminal box and secure it with the set screw.



4. Install the back cover into the terminal box and secure it with the set screw.

Function and Operation



1. On/Off Button	4. Sensor Selection	7. Day and Time
2. Mode	5. Setpoint	8. Touch Key
3. Temperature	6. Event	

On/Off

Press button to turn on or turn off.

Temporary Override Temperature

Override temperature is a temporary temperature setting in auto mode and has no effect on schedule 4-event program.

To Do So:
 With Active Display press ▲ or ▼ to set temperature.
 Press **OK** to confirm and return to Active Display.

Mode Selection

Three Modes are available.

Auto Mode: The thermostat automatically runs according to the weekly-program parameters.

Manual Mode: The thermostat runs according to manually select temperature.

Anti-frozen Mode: The thermostat runs at a lower set temperature. The temperature range can be set from 5°C to 15°C in this mode. This mode is intended to be used when the home is unoccupied and keeps the home at a lower temperature.

To Do So:
 With Active Display (backlight on) press **OK** to activate the menu. **MODE** flashes.
 Press **OK** to confirm.
 Press ▲ or ▼ to choose mode you need.
 Press **OK** to confirm.
 If you select Manual mode or Anti-frozen mode, you also need to press ▲ or ▼ to set the temperature.
 Press **OK** to confirm and return to Active Display.

Key Lock

To lock the thermostat menus to prevent the settings from being changed.

Note: For emergency,  can run.

To Do So:
 1. With Active Display (backlight on) press |◀ until lock symbol appears.
 2. With Active Display, press **OK** button until **MODE** flashes.
 Press ▲ or ▼ until the Key lock option flashes.
 Press **OK** to set.
 Press **OK** to confirm.
 Press **OK** to get back to return to Active Display.
 To unlock the Key lock:
 With Active Display, press and hold |◀ simultaneously for three seconds.

Weekly Program Parameter Setting

In the auto mode, the thermostat runs automatically according to the setting parameters of the weekly program.

The weekly program parameters contain two major parameters: Schedule and Event.

Schedule: Two schedules for a week.

5+1+1: Event parameter is the same Monday to Friday, with separate Event parameters on Saturday and Sunday.

7: Separate Event parameters every day.

Schedule Setting:
 With Active Display, press **OK** until **MODE** flashes.
 Press **▲** or **▼** to choose Schedule.
 Press **OK** to enter.
 Press **▲** or **▼** to set.
 Press **OK** to confirm.
 Press **OK** to return to Active Display.

Event: Home

- when I wake up in the morning
- when I am away at work
- when I come home
- and at night

Event: Work

- When I am at work
- When I get off work

Temperature in each event can be set.

To Do So:
 With Active Display, press **OK** until **MODE** flashes.
 Press **▲** or **▼** to choose Event.
 Press **OK** to choose week.
 Press **▲** or **▼** to choose the day.
 Press **OK** to enter event.
 Press **▲** or **▼** to set the parameters in that event.
 Press **OK** to set the temperature for this phase.
 Press **▲** or **▼** button to set the temperature.
 Press **OK** to set the hour that the temperature starts.
 Press **▲** or **▼** to set hour.
 Press **OK** to set the minutes that the temperature starts.
 Press **▲** or **▼** to set minutes.
 Press **OK** to return to this phase.

Note: Press **◀** several times to get back to active display.

Event: Factory Settings for Event

Home								
Week	Wake ☀		Leave ⬆		Return ⬆		Sleep ☾	
	Start time	Temperature	Start time	Temperature	Start time	Temperature	Start time	Temperature
Mon--Fri	6:00	25.5°C	8:00	20.5°C	17:00	25.5°C	22:00	20.5°C
Sat--Sun	8:00	25.5°C	8:30	25.5°C	17:30	25.5°C	23:00	20.5°C
Office								
Week	At work ☀		Get off work ☾					
	Start time	Temperature	Start time	Temperature				
Mon--Fri	7:00	25.5°C	18:00	20.5°C				
Sat--Sun	7:00	20.5°C	18:00	20.5°C				

Settings

This thermostat also can be used to other application with different setting. It should be set by professional technicians to avoid damage caused by abnormal settings.

To Do So:
With Active Display, press **OK** until **MODE** flashes.
Press **▲** or **▼** to choose settings.
Press **OK** to confirm.

Setting Parameter:

1. Time

Set date and week

Time Setting:
Choose setting. Press **▲** or **▼** button to set time.
Press **OK** button to confirm.
Press **▲** or **▼** button to choose hour you need.
Press **OK** button to set minutes.
Press **▲** or **▼** button to choose minutes you need.
Press **OK** button to set week.
Press **▲** or **▼** button to choose the day you need.
Press **OK** button to enter the hour setting of the day

Note: Press **◀** several times to get back to active display.

2. Temp Unit

Change the temperature unit (°C/°F) used in the display.

Temp Unit Setting:
Choose settings. Press **▲** or **▼** to choose °F/°C.
Press **OK** to enter.
Press **▲** or **▼** to choose the unit.
Press **OK** to confirm.
Press **OK** to return to Active Display.

3. Sensor Type

This thermostat can be connected not only to the provided floor sensor but also to two other commonly used floor sensors. When replacing an old thermostat, there is no need to replace the floor sensor.

Sensor Type Setting:
Choose settings. Press **▲** or **▼** to choose Sensor type.
Press **OK** to enter.
Press **▲** or **▼** to select Sensor type.
Press **OK** to confirm.
Press **OK** to return to Active Display.

No.	Senor type	Parameters
00	3950 (Provided)	
01	3600	R(25°C)=12kΩ R(10°C)=22.2kΩ
02	3700	R(25°C)=10kΩ R(10°C)=19.1kΩ

4.Sensor Selection

This thermostat has floor sensor and built-in air sensors to detect room temperature. Therefore, three sensor applications are available:

Room: Controls the room temperature based solely on built-in sensors.

Floor: Controls the floor temperature based solely on the floor sensor.

Room.Limit: Controls the room temperature based on built-in sensors while monitoring the floor temperature to ensure it does not exceed an upper limit. This application can be used in places such as timber floors where maximum floor temperature is critical.

Sensor Selection Setting:

Enter settings. Press ▲ or ▼ to choose sensor selection.

Press **OK** to enter.

Press ▲ or ▼ to choose required sensor.

Press **OK** to confirm.

Press **OK** to return to Active Display.

5.Calibration

This thermostat has built-in probe and floor sensor calibration function in the case of demand for higher precision.

Calibration Setting:

Enter settings. Press ▲ or ▼ to choose Calibration.

Press **OK** to choose room or floor.

Press ▲ or ▼ to choose built-in probe or floor sensor.

Press **OK** to enter calibration.

Press ▲ or ▼ to adjust the real-time temperature to match the displayed temperature value of the calibration instrument.

Press **OK** to return to Active Display.

6.Location

This thermostat is suitable for use in both homes and workplaces. For the workplace, a set of weekly program parameters is built in. See the Weekly Program Parameters section for details.

Location Setting:

Enter settings. Press ▲ or ▼ button to choose Location.

Press **OK** button to choose office or home.

Press ▲ or ▼ button to choose office or home.

Press **OK** button to confirm.

Press **OK** to return to Active Display.

7.Adaptive

This thermostat features an adaptive function that automatically changes heating period start times to ensure that the required temperature is reached at the required time.

Adaptive Setting:

Enter settings. Press ▲ or ▼ to adaptive.

Press **OK**.

Press ▲ or ▼ to choose Yes or No.

Press **OK** to confirm.

Press **OK** to return to Active Display.

8.Readout

This thermostat can read the percentage of time that the heating has been turned on within a certain period.

Readout Setting:
Enter settings. Press ▲ or ▼ to Readout.
Press **OK**.
Press ▲ or ▼ to choose 1Day, 30Days or 365Days.
Press **OK** to return to Active Display.

9.Factory Reset

Factory Reset Setting:
Enter settings. Press ▲ or ▼ to Factory Reset.
Press **OK**.
Press ▲ or ▼ to choose Yes or NO.
Press **OK** to confirm.
Press **OK** to return to Active Display.

Setting parameters

No.	Name	Default parameter	Setting range
1	Time	/	/
2	°F/°C	°F	°F °C
3	Sensor Type	00 3950	00 3950 01 3600 02 3700
4	Sensor Selection	Floor	Room Floor Room.Limit
5	Calibration	0°C	-5°C -- 5°C
6	Location	Home	Home Office
7	Adaptive	No	Yes No
8	Readout	/	/
9	Factory Reset	N o	No Yes

Troubleshooting

E1: Built-in probe failure, please contact your dealer or professional technician.
E2: External probe failure, please contact your dealer or professional technician.

Dimensions (mm)

