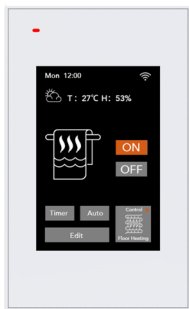




# CB Smart 3-25 and CB Smart 3-Plus

## Instruction Manual



# Contents

Introduction & Warnings	2
Installation	3
Wiring Instructions	4
Dimensions	5
Thermostat Symbols	6
Technical Specifications	7
Function and Operation (Floor Heating)	7
Wi-Fi Connection	14
Function and Operation (Towel Rack)	17
Troubleshooting	21

## Introduction

The CB Smart Wi-Fi thermostat range is designed for controlling electric underfloor heating systems. The CB Smart 3 25 is a single-zone thermostat with a 25-amp capacity, making it ideal for heating loads. The CB Smart 3 Plus provides a 16-amp heating load and includes an 8-amp auxiliary timer, which is perfect for running a towel rail alongside your main floor-heating system.

Both models allow efficient and reliable control of electric underfloor heating and towel rails.

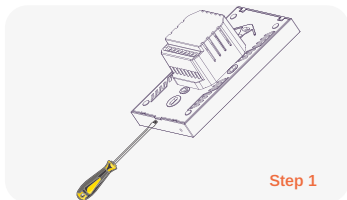
## Warnings

Installation or replacement of this product should only be done by qualified personnel.

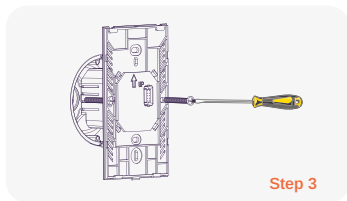
1. To avoid risk of electric shock, turn OFF the power source from the main service panel prior to installation of the thermostat.
2. Keep thermostat air vents clean and free from obstruction.
3. Electric floor heating cable/mat must be suitable for the thermostat supply voltage.
4. All wiring must conform to local as well as national electrical codes and ordinances.
5. Thermostat terminals are designed to handle a cross-section of wire measuring 12-22AWG.



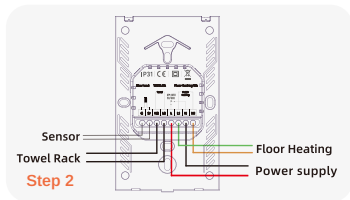
# Installation



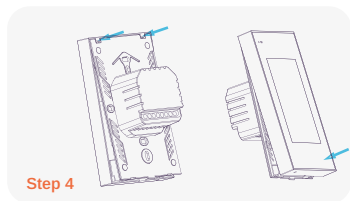
Use a flat-head screwdriver to pry the product from the middle of the bottom.



Make sure that during the mounting of the back cover, that the mounted screen on the front cover is readable (it is in "upside up" position).

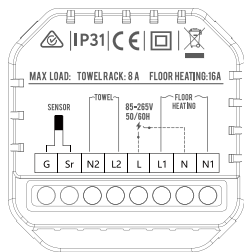


Complete the electrical connection of the rear panel.

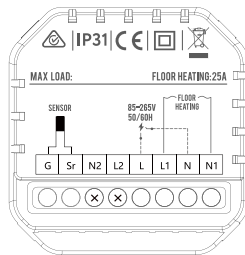


When installing the front panel, install the upper buckle and press the bottom buckle to install the bottom buckle smoothly.

# Wiring Instruction



16+8A:3600W+1800W



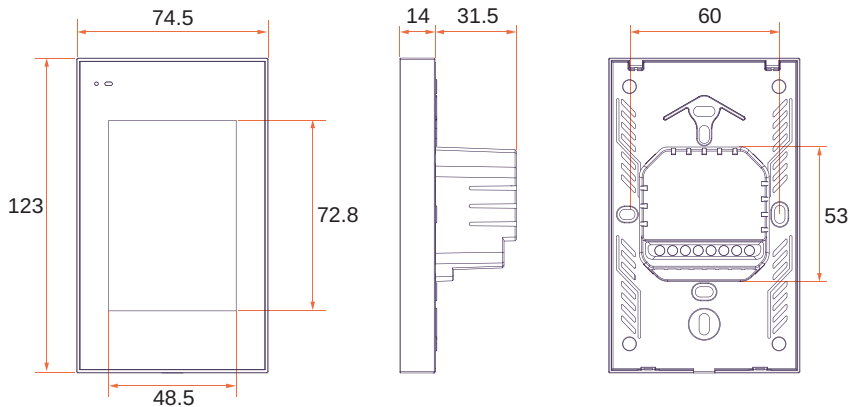
25A:5500W

- \* L / N Connect the AC 230V (50 Hz) phase wire of the mains power supply here.
- \* L1 / N1 Connect the phase conductor of the electrical resistance based heating element here.
- \* L2 / N2 Connect the towel rack load.
- \* Sr / G Connect the floor sensor.



\*Please note the maximum load current marked on the product.  
Different versions of the product have different load power.

# Dimensions



# Thermostat Symbols

Electric Floor Heating Heating Light

Towel Rack Heating Light

Time

Mon 22:00



Wi-Fi

Temp.

24.4°



Weather

Sensor Status

Air Sensor Error

T : 07°

H : 53%

Operating Mode

Manual Mode

Setting Temp.

25.4°



Up & Down Regulation

Next Schedule

Wake: 22.0° 07:00

Mode Selection

Mode

Control

Control System Switching

Settings

Edit



Towel Rack

Mon 12:00



T: 07° H: 53%



ON

Towel Rack Working Status

OFF

Timer Mode

Timer

Auto

Control

Auto Mode

Edit



Floor Heating

Thermostat Mode

Towel Rack Mode

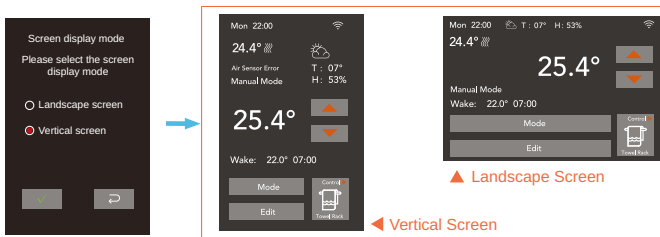
Supply Voltage: 85-265VAC 50/60hz  
Max Load: 25A:5500W  
Sensor: NTC 10kW25°C B3950  
Stand By Power: <1W  
Cable Specification: ≤ 2.5mm<sup>2</sup>

Operating Frequency 2.4GHz Wi-Fi: 2412-2473Hz  
Max Output Power: 18.20dBm  
Operating Frequency 5GHz Wi-Fi: 5150-5850Hz  
Max Output Power: 17.22dBm

# FUNCTION AND OPERATION FLOOR HEATING

## First Power On

When you use the system for the first time, the system will prompt you to choose either a landscape or a portrait display depending on your installation preference.



# Modes of Operation

This thermostat provides three operating modes:

- **Auto Mode**

According to the weekly program, the thermostat automatically adjusts the set temperature operation. This mode generally runs by default. In this mode, you can press the up or down key to set a temporary temperature. The temporary override temp is only valid at the current event and it will not be saved.

- **Manual Mode**

The thermostat runs continuously according to the set temperature.

- **Anti-Freeze Mode**

This mode is used if you want to keep your room at a lower temperature when you are away for an extended period of time. This operating mode prevents damage to household/ office equipment caused by sudden exposure to cold temperatures. The set-point temperature range is set to maintain from 5°C - 15°C in this mode.

- **Off**

Manually turn off all functions of the thermostat. When the device needs to be started, press and hold the on/off button on screen for 3 seconds.



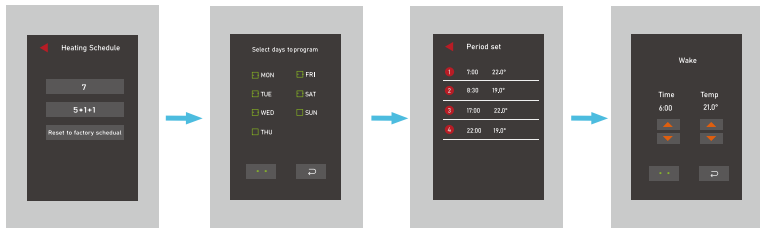
# EDIT SELECTION

## • Heating Schedule

Two options are available to choose from:

**5+1+1:** The Event parameter is the same from Monday to Friday, with separate event parameters on Saturday and Sunday.

**7:** With separate Event parameters every day.



Go to the heating schedule page and select 7 or 5+1+1. In 7-day mode, multiple days can be selected and programmed at the same time.

Each day can be divided into four periods: Wake, Leave, Return, and Sleep. Set the start time for each time period and the temperature to be maintained during that time period.

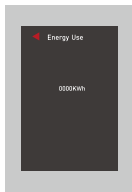
The Factory Default Weekly Program is as follows:

### Home

Period	Wake		Leave		Return		Sleep	
	Time	Temp.	Time	Temp.	Time	Temp.	Time	Temp.
1-5 (Mon.-Fri.)	07:00	22	08:30	19	17:00	22	22:00	19
Sat.	08:00	22	08:30	22	17:00	22	22:00	19
Sun.	08:00	22	08:30	22	17:00	22	22:00	19

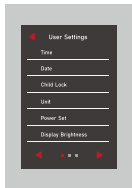
### Office

Period	Wake		Leave	
	Time	Temp.	Time	Temp.
1-5 (Mon.-Fri.)	07:00	20	18:00	15
Sat.	08:00	15	18:00	15
Sun.	08:00	15	18:00	15



### • Energy Use

This option is used to calculate energy usage. The user sets the power in the Power Set, or you can set it through the APP. The thermostat will automatically determine the heating time and calculate the energy consumption.



### • User Settings

**Time:** Displays the current time in hh:mm format.

**Date:** Displays the current date in day / month / year format.

If the thermostat is online, the time will be updated automatically.

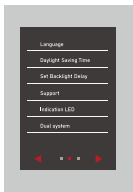
**Child Lock:** Lock all keys to prevent the setting from being changed.

Hold the up button on the main interface for 3 seconds to unlock.

**Unit:** Set your preference for temperature measurement in °C / °F

**Power Set:** 0W-4500W. The power setting of the electric floor heating and the power setting of the towel rack are independent of each other.

**Display Brightness:** Set your preference for display brightness between 1-9.



**Language:** Set your preference for language. English / French / Chinese  
**Daylight Saving Time:** When enabled, the thermostat will adjust automatically to daylight saving time.

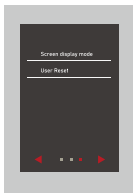
**Set Backlight Delay:** 5-60 seconds.

**Support:** Scan the QR code to view the thermostat pages on the Coldbuster website. For further support, please contact Coldbuster.

Call: **1800 85 75 65** Text: **0488 855 826** Email: **support@coldbuster.com.au**

**Indication LED:** If the heat indicator is interfering with your sleep, use this option to turn the heat indicator off.

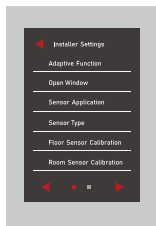
**Dual System:** If you need the floor heating and towel rack to work at the same time, turn this feature on. When closed, only the heating system displayed on the current main page is run. The control toggle symbol is hidden as shown in the image below.



**Screen Display Mode:** Use this mode to select either Landscape or Vertical.

**User Reset:** This will reset the users settings to Factory Default.

• **INSTALLER SETTINGS** (These settings are only for electric floor heating)



**Adaptive Function:** When this feature is enabled, the room will have reached the target / set temperature when the event begins.

**Open Window:** This setting refers to when the thermostat is in the heating state. If the temperature decrease sharply, the thermostat will pause heating, and then restart the heating after 15 minutes.

**Sensor Application:** 1. Room 2. Floor 3. Room and Floor. When selecting the Room and Floor option, the main screen displays the temperature as the air sensor temperature, and the floor sensor displays the temperature under the floor.

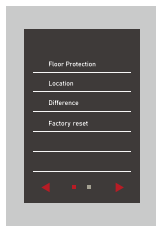
**Sensor Type:** B3950 – 10K, B3380 – B3700 – 10K, B3600 – 12K, 15K.

**Floor Protection:** This is used when Room & Floor Sensor application is chosen. The max floor temperature can then be set. E.g. 27°C for timber floors. So even if the std temperature setting is room temperature, the floor temp won't go above 27°C.

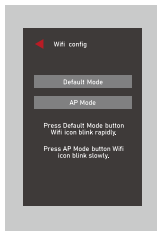
**Location:** Home / Office. After switching the scene, the weekly program function changes.

**Difference:** This setting refers to the difference between the switch on and off period during heating time. The thermostat starts when the room temperature is 1°C lower than set temperature and stops when the room temperature is 1°C higher than the set temperature.

**Factory Reset:** This will reset the thermostat to factory settings. Note that personal settings will be lost.



# Wi-Fi Connection



Provides two modes for Wi-Fi connection: If you have been unable to find the device in the APP, you can try switching modes to find the device.

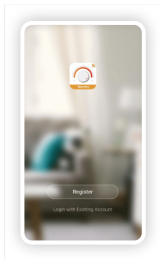
Note: If you already have your device connected to Wi-Fi, you can reset it here.

**Default Mode:** Wi-Fi icon blink rapidly.

**AP Mode:** Wi-Fi icon blink slowly.

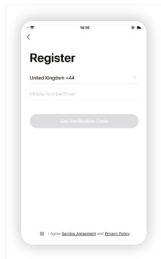


**Step 1:** Scan the QR code or download the warmme APP from APP Store or Google Play.



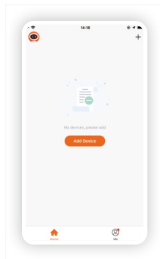
1

Scan the QR code or download from APP Store / Google Play.



2

Register and log-in with mobile number / email address in the APP.



3

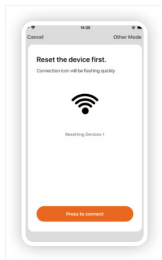
Click 'Add Device' or '+' on the top right to add device.



4

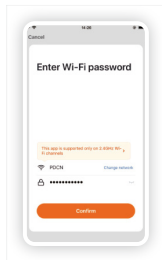
Click 'Wi-Fi thermostat'.

**Note:** Please read and agree to the 'Privacy Policy and Service Agreement' before registration.



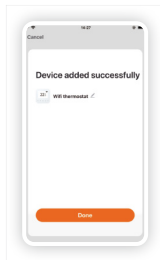
5

Operate thermostat.  
If the Wi-Fi icon flashes quickly, click 'Press to connect'.



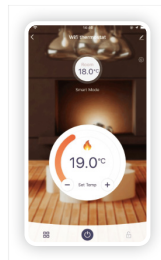
6

Enter Wi-Fi password,  
and click 'Confirm'.



7

If the device is added successfully, you can change the device name and set region. Then, click 'Done'

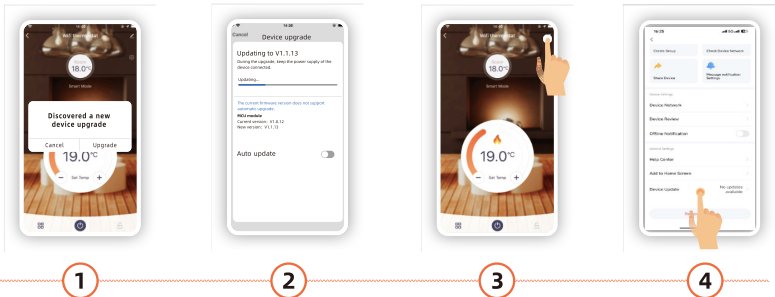


8

You can check the actual temperature and set temperature etc. on the control interface.

# Over The Air OTA Upgrade

The product version with Wi-Fi capability supports remote firmware upgrade of the device.



1

Enter the APP control interface. The firmware upgrade prompt will pop-up automatically.

2

The firmware upgrade page is displayed.

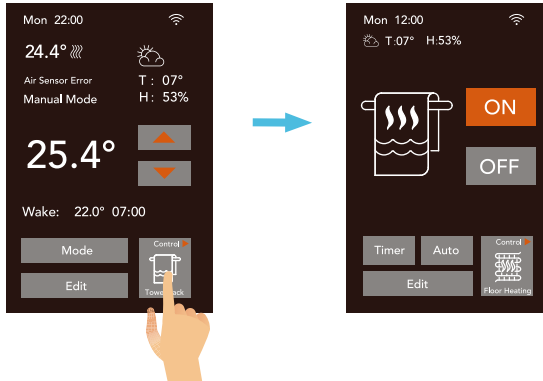
3

Non essential firmware will not be upgraded automatically. Click the icon in the upper righthand corner to check whether there is a new firmware upgrade.

4

**Note:** After an important upgrade is cancelled, APP controls will not be available.


# Function And Operation of Towel Rack



Switch the control page of electric floor heating and towel rack by pressing the control switch icon.

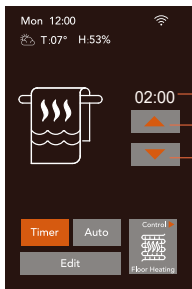
The electric towel rack control function provides 3 control methods:

- **ON / OFF**

This setting allows you to manually control the temperature of the towel rack. When clicking the “ON” icon, the icon turns orange, indicating that the heating is on, and the heating icon  appears on the screen.

- **Timer Mode**

When pressing the timer button the time setting will appear on the right. The display format is hh:mm. This time refers to the countdown time.



Remaining Time

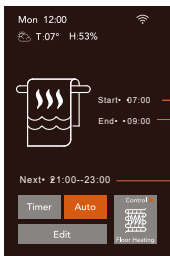
Add Time

Reduce Time

The time step is set to 10 minutes

## • Auto Mode

Follow the set weekly procedure to control the towel rack Start time and End time.



Start time of the current heating period

End time of the current heating period

Next heating session

## • Heating Schedule

Two options are available to choose from:

5+1+1: The event parameter is the same from Monday to Friday, with separate event parameters on Saturday and Sunday.

7: With separate event parameters every day the Factory Default Weekly Program is as follows:

Period	1		2	
	Start Time	End Time	Start Time	End Time
1-5 (Mon.-Fri.)	07:00	09:00	21:00	23:00
Sat.	08:00	10:00	21:00	23:00
Sun.	08:00	10:00	21:00	23:00

# Troubleshooting

1. The thermostat's display is dark, it is not lighting up.
  - Remove the thermostat and check that the power wiring is correct.
  - Ask your electrician to check whether the L / N power cable has a voltage output.
  - Is there any visible abnormal changes, or any signs of damage to components, on the thermostat's relay or front panel? If so, please contact Coldbuster support to arrange for a repair or replacement. [support@coldbuster.com.au](mailto:support@coldbuster.com.au)
2. The display is lighting up, but the heating is not working.
  - If the real room temperature cannot be seen on the display, it may mean that the thermostat needs calibration. Calibrate the device by following the instructions in the manual.
  - When the thermostat is turned on, press the button so that the set value exceeds the room temperature. Check to see if the heating icon appears on the display. It should take a few seconds and make a soft clicking sound.
  - Does the thermostat control the temperature of a flooring product that requires a temperature limit setting? If yes, check the controller's surface-limit values as outlined in the Instruction Manual. Adjust the limit if required. If the displayed surface temperature appears inaccurate, further investigation is needed. Ensure no furniture, carpet, or other insulating material is covering the floor sensor, as this can affect heat transfer. If no external cause is found, the sensor may be faulty. Please contact Coldbuster support to arrange inspection, repair, or replacement: [support@coldbuster.com.au](mailto:support@coldbuster.com.au).

If no, the thermostat itself may require examination. Please contact Coldbuster support to arrange for a repair or replacement: [support@coldbuster.com.au](mailto:support@coldbuster.com.au).

3. Even after switching on the thermostat, and increasing the temperature, and hearing the thermostat click, and seeing the heating icon on the screen, there is still no heating.

- Check to see whether the heating power exceeds the rated power requirement.  
If yes, please, ask your electrician to check whether the power switching relay, is working correctly. (the circuit is supplemented with a power switching relay). Or, please contact Coldbuster support to arrange for troubleshooting. [support@coldbuster.com.au](mailto:support@coldbuster.com.au)
- Check to see whether the heating power supply wires are connected to the built-in relay of the thermostat.  
If no, ask your electrician to connect it.
- Can you measure voltage on the thermostat's switched output?  
If yes, this indicates that the thermostat is functioning correctly.  
If no, the thermostat needs to be examined, please contact Coldbuster support to arrange for troubleshooting. [support@coldbuster.com.au](mailto:support@coldbuster.com.au)



Room Sensor Error



Floor Sensor Error



## Download the app

Compatible with IOS and Android



**OTA**

Unit 10/14 Rodborough Rd 14 Rodborough Rd,  
Frenchs Forest NSW 2086, Australia

**COLDBUSTER**<sup>®</sup>  
*floorheating*  
Affordable Luxury<sup>™</sup>

### Contact

For enquiries and your FREE quote:

Coldbuster Floor Heating

Call: **1800 85 75 65**

Text: **0488 855 826**

Email: **support@coldbuster.com.au**

### This manual applies to the following product models

CB Smart 3-25 25A electric floor heating for Wi-Fi version

CB Smart 3-Plus 16A electric floor heating +8A towel rack for Wi-Fi version